



LAYING THE FOUNDATION FOR THE FUTURE

**Boulder Valley Women's Health Center
2010 Annual Report**



MISSION

The Mission of Women's Health (Boulder Valley Women's Health Center) is to provide accessible, confidential and comprehensive gynecological and reproductive healthcare, including sexual health services and education.

VISION

Women's Health envisions a healthy community of people empowered to make informed choices about their sexual health and well-being.

CORE VALUES

Women's Health will meet its mission:

- By providing quality healthcare and services regardless of a client's insured status, economic circumstances or immigration status;
- With respect for the dignity of our clients;
- With compassion and caring;
- By remaining committed to reproductive justice;
- By actively including those who experience unique barriers to healthcare access including mono-lingual Spanish speakers, youth, GLBTQI*, racial/ethnic/cultural communities and people with disabilities;
- By providing medically accurate, comprehensive and respectful education;
- By utilizing resources in a way that provides healthcare within our scope of practice and consistent with the standard of care to as many clients as possible; and
- By providing a work environment for all employees that is affirming and respectful of them as individuals and empowers and encourages success.

*GLBTQI: Gay, Lesbian, Bisexual, Transgender, Questioning, Intersex

CONTENTS

2010 ANNUAL REPORT

Message from the Director	2
Major Initiatives & Accomplishments	3
Services & Programs	
Subsidized Family Planning/Gynecology	4
Abortion Services	5
Youth Services	6
Latina Outreach	7
Financials	8
FY 2010 Donors	10
Board of Directors & Administrative Staff	12

**From the
Executive
Director**



PREPARING THE FOUNDATION

After years of investigation, planning and preparation, 2010 marked the year that Women's Health moved forward with a plan to prepare our organization for a future of health care reform, health information technology, and changing needs in our community. Our plan addressed issues of geographic reach of our services, capacity to serve those in need, and sustainability, both economically and environmentally. As a result of our careful planning and with support from our community, we have now laid the building blocks for a secure future so that Women's Health will continue to provide essential services in Boulder County for another 38 years!

First, after almost four years of sharing space in Longmont with Boulder County AIDS Project, their needs and ours had changed and the decision was made to purchase the facility from BCAP. We are so grateful for our collaboration with BCAP that allowed both organizations to expand our presence in Longmont, while providing lots of mutual support to each other.

Next, an extensive review of health information technology (HIT) options led us to select the iPN as our partner in implementing a comprehensive new HIT system that not only included an electronic medical record (replacing paper charts), but also electronically connects Women's Health with over 30 other physician groups, including Clinica Family Medicine and People's Clinic.

And, most significantly, Women's Health went forward with a complete remodel of our clinic in Boulder. Our facility had become tired looking and inefficient for the scope of clinical services and outreach/education that we now provide in Boulder County. The new design improves patient flow, security and privacy and also adds administrative space for our expanded education and outreach in the community.

We are confident that our efforts will position Women's Health for a future where we continue to meet our mission in Boulder County and invite you to join with us. Together we can assure that women, men and teens will continue to receive expert reproductive healthcare and education long into the future.

A handwritten signature in blue ink that reads "Susan". The signature is fluid and cursive.

Susan B. Levy, Executive Director

MAJOR INITIATIVES & ACCOMPLISHMENTS OF 2010

LONGMONT EXPANSION

In an effort to increase our services to the Longmont area, Women's Health purchased the condominium space that we had been sharing. We now have exclusive use of Suite C in the Powell Building, where other owners include Safe Shelter of St Vrain Valley and the Wild Plum Head Start program. We expanded the scope of our Longmont services in September 2010 to include adult services in addition to the Teen Clinic services that we had been providing in that space since 2006.

BOULDER REMODEL

A major renovation of the Boulder facility on Valmont Road began in November 2010. The new design added offices and other work space and laid out the clinical space more efficiently. Completion is expected by April of 2011. This required a move to a temporary facility and digging through 23 years of stuff, but will result in a first-class facility to complement the first-class health care that we have provided for years.

HEALTH INFORMATION TECHNOLOGY

Health care reform has provided some significant incentives for health care providers to implement electronic medical records (EMR), both to decrease duplicative services and improve quality of care. Women's Health is the first Title X clinic in the state of Colorado to implement an integrated EMR system that can communicate directly with others in the iPN network of providers. This allows our providers to electronically access medical information from any other provider that has seen one of our patients and more efficiently coordinate care. Another benefit of EMR is the ability to easily track treatment outcomes to establish the quality of the services we provide.

CAPITAL CAMPAIGN FOR WOMEN'S HEALTH

In 2010, Women's Health also began the Campaign for Women's Health, a donor development and fundraising effort to support the purchase of the Longmont facility and renovations at the Boulder facility. With the consultation of Ann Goldman from Ann Goldman Consulting, Inc., and supported by a Capital Campaign steering committee chaired by Joan Brett and Brook Eddy, we embarked on an ambitious goal to raise \$1.15 million over the next two years. We are particularly focused on increasing the number of donors from the Longmont area, while inviting our long-time supporters to invest in our future. By year end we had raised one half of the total amount and intend to complete fundraising by December 2011. We invite all community members to consider making a gift toward the future of Women's Health by giving to the Campaign, either on line, by mail or during one of our capital campaign fundraising events.

SUBSIDIZED MEDICAL SERVICES

Family Planning/Gynecology

In 2010, Women’s Health served a total of 4,030 patients in our subsidized clinical programs. Services are offered on a sliding scale based on income, so that all people – including the uninsured and low-income – have access to high quality reproductive health care. About 85% of Women’s Health patients receive some sort of discount or subsidy on their services. Subsidized programs include family planning services and supplies, testing and treatment for STIs, cancer screenings, gynecological exams, and treatment for gyn disorders and abnormalities. While Women’s Health offers these services on a sliding scale to make them accessible to the uninsured, we also accept insurance.

In 2010, Women’s Health served 2,353 adults in our subsidized family planning and gynecology programs, an increase of 13% over the previous year. (For information on Teen Clinic, please see *Youth Services on p. 6.*) For many in our community, 2010 continued to be a year of economic instability, loss of jobs and loss of health insurance, resulting in a greater demand for subsidized services.

In November, Women’s Health Boulder clinic moved to a smaller temporary facility while our clinic was being remodeled, decreasing our capacity by 50%. Some of this decrease, however, was offset by an expansion in hours and services at our Longmont clinic. The Longmont location, originally founded in 2006 as a Teen Clinic, expanded in September 2010 to serve adults as well as teens. Now known as **Women’s Health at Longmont**, the clinic meets a previously unmet need in the Longmont community for family planning services for youth and adults (age 20 and above) on a sliding scale that slides to \$0.

Contraceptive Continuity Initiative

October 2010 marked the successful conclusion of our three-year Contraceptive Continuity Initiative grant (CCI). CCI allowed us to provide long-term and permanent contraceptive methods at low or no cost, thereby reducing the barrier of cost typically associated with these highly effective methods.

Since the inception of CCI in October 2007, Women’s Health has provided 1,537 patients with low or no cost long-term reversible methods such as IUDs or Implanon, and permanent methods such as Essure, tubal ligations, and no-scalpel vasectomies. In 2010, 600 patients received a long-term or permanent method, including 31% of abortion patients, an increase of 20.2% over the previous year.

Total Patients Served Clinicwide	
Subsidized Clinical Services:	
Adults:	2353
Teens:	<u>1677</u>
<i>Total Subsidized:</i>	4,030
Abortion Care:	463
<i>Total Clinicwide:</i>	4,493

NON-SUBSIDIZED MEDICAL SERVICES

Abortion Care

Women's Health was established in 1973 as the first abortion clinic in the state of Colorado. Today, we continue to provide safe, confidential and affordable abortion services during the 1st trimester of pregnancy. Patients can choose between an in-office procedure or medication abortion (the abortion pill). In 2010, Women's Health served 463 abortion patients, down 13% from 2009. While the number of abortions has been trending downward in recent years, the percentage of patients choosing medication abortion continues to increase, growing to 26% of abortion procedures at Women's Health in 2010.

Counseling

Women's Health provides the highest standard of counseling support and services. Our professional masters-level counselors bring an extensive background of counseling, social work and psychotherapy experience to our patients. We offer counseling in advance of the abortion appointment for patients who are anxious, conflicted or ambivalent. We provide individual counseling and emotional support as part of each patient's abortion appointment. Free and confidential post-abortion counseling is also available to patients who request it at any time subsequent to the abortion.

Financial Assistance

Because there is no government money and little grant support available for abortion services, Women's Health maintains a private fund to assist women who cannot afford the cost of the procedure. This fund, the Reproductive Equality Fund (REF), is supported entirely through donations from individuals in our community. We are also able to draw on other abortion funds to help assist our patients.

In 2010, Women's Health coordinated \$40,194 in abortion funding for 184 women (40% of all abortion patients), an increase of 28% over the previous year. Of that total, \$16,284 came from REF, \$21,685 from the National Abortion Federation, \$885 from The Freedom Fund, and \$1,340 from the Special Needs Fund.



YOUTH SERVICES

Medical

Teen Clinic

Women's Health provides clinical services to young women and men under age 20 during clinic time reserved exclusively for youth. Teens can also be seen during regular family planning hours. Teen Clinic services are free and confidential. In 2010, Teen Clinic served 1,598 youth: 1,104 in Boulder and 494 in Longmont.

Home-Based Contraception (HBC)

HBC is a joint program with Boulder County's GENESIS program for pregnant and parenting teens. During home visits, a Women's Health nurse provides contraception to already-parenting teens, thereby preventing repeat unintended pregnancies. In 2010, HBC served 75 clients in Boulder County, an increase of 15% over 2009.



Education and Outreach

Community Health Education

Women's Health Community Health Educators provided comprehensive sexuality education to 5,645 students in the Boulder Valley and St. Vrain Valley School Districts in 2010, a 20% increase. Presentations in Broomfield doubled. Our focus on underserved youth was successful in increasing contact with teens of color and males. Retrospective survey results show significant increases in knowledge after presentations by Women's Health staff.

SHAPE (Sexual Health & AIDS Awareness Peer Education)

In 2010, 15 high school youth from Boulder, Longmont and Lafayette volunteered 1,350 hours of their time in SHAPE, a joint program of Women's Health and Boulder County AIDS Project. SHAPE volunteers reported 3,364

one-to-one interactions with their peers. SHAPERS also used social media (Facebook and MySpace), videos, and other creative strategies to outreach to their fellow teens.

The Youth Technology Initiative

Our Youth Services program has been at the forefront of using the latest technologies to reach out to teens with prevention messaging. An interactive Q&A feature on the Teen Clinic website and a confidential text messaging line allow youth to ask their sexual health questions 24 hours a day and receive medically accurate answers. In 2010, Women's Health received 889 questions from 682 unique mobile numbers on the text message line. Our Youth Services staff were nationally recognized for these innovations and asked to present at several conferences in 2010: the SexTech conference in San Francisco, the Title X regional conference, and the Healthy Teen Network conference in Austin, TX.



LATINA PROGRAM

Outreach and education efforts, the main focus of the Latina Program, reached a record 1600 people in the Latino community in 2010. Education in the St. Vrain Valley School District was also incorporated into the program in 2010, and the Latina Program Director's office was moved to Women's Health Longmont location. In clinical services, 407 monolingual Spanish-speaking patients were served in 2010.

Boulder County Multicultural Award

Mirna Castro, Latina Program Director for Women's Health, was honored with a Boulder County

Multicultural Award in October 2010. The Multicultural Awards are presented each year by the Boulder County Community Action Programs to recognize people of different ethnic backgrounds who have made significant contributions in the county. Mirna (pictured, above left, with Women's Health Executive Director Susan Levy) was recognized for her outstanding work at Women's Health, which includes translation and interpretation for monolingual Spanish-speaking patients, supervision of bilingual staff members, community outreach and health education presentations in Spanish.

La Ley Radio

Also in 2010, Mirna Castro had a unique outreach opportunity through Spanish-language radio station 1170AM La Ley. Mirna guest-hosted two shows on topics related to reproductive health. Radio host Lalo Delgado invited Mirna to speak to the Latino community about reproductive health, considered a *risqué* topic in the Latino community. One show focused on issues of teen pregnancy and the lack of communication and education about sexual health within the Latino community. The second focused on birth control methods and debunking some of the myths around sterilization and condom use. La Ley is a popular radio station among the Latino community in the Ft. Collins, Greeley and Longmont area. Women's Health appreciates their invitation and their willingness to bring these topics before the community.

OUTCOMES

Are we doing what we say we do and are we doing it well?

Unintended Pregnancy rate:

- 2% in all family planning patients
- 2% in Youth program

(Compare to Healthy People 2010 goal of 30%)

Sexually Transmitted Infections:

- Only 1.8% of returning patients have a new STI.
- 4% of patients in Teen Clinic have an STI.

(Healthy People 2010 goal = 3%)

FINANCIALS

REVENUE

	<u>Amount</u>	<u>Percent</u>
Government Grants	1,086,173	38.5%
Foundations	1,032,182	36.6%
Contributions	130,210	4.6%
Subsidized Program Revenue	252,356	8.9%
Non-Subsidized Program Revenue	206,016	7.3%
Fundraising Events	101,283	3.6%
Other Revenue (Interest Income)	13,664	0.5%
	<hr/>	
Total Revenue	2,821,884	100.0%

EXPENSES

Subsidized Programs	1,995,578	73.6%
Non-Subsidized Programs	463,089	17.1%
Management, Fundraising & General	253,811	9.4%
	<hr/>	
Total Expenses	2,712,478	100.0%

EXCESS OF REVENUE OVER EXPENDITURES 109,406

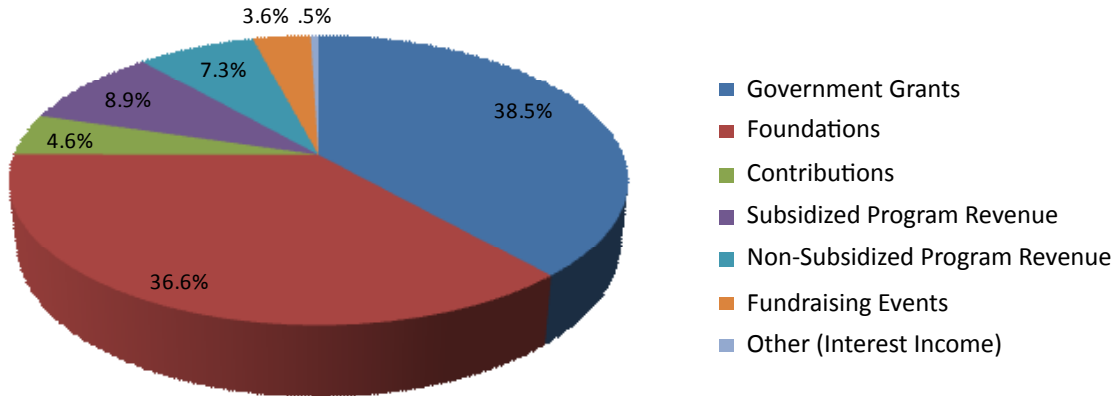
ASSETS

Cash, Accounts/Grants Receivable, Inventory	1,252,351
Land, Buildings, Equipment (net of accumulated depreciation)	<u>747,911</u>
Total Assets	<u>2,000,262</u>

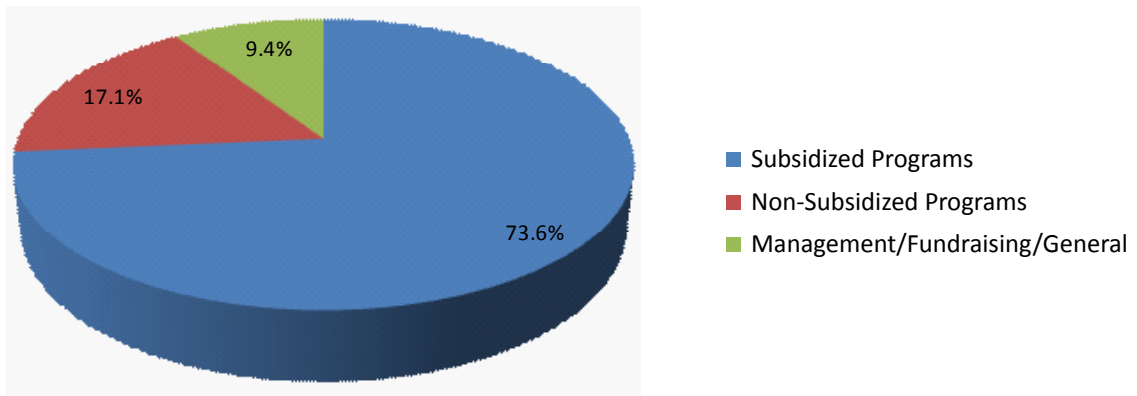
LIABILITIES & NET ASSETS

Short-term (Accounts payable, Accrued expenses)	150,252
Long-term (Mortgage, Notes and Capital leases)	<u>236,953</u>
Total Liabilities	387,205
Net Assets (Restricted and Unrestricted)	1,613,057
TOTAL LIABILITIES AND NET ASSETS	<u>2,000,262</u>

REVENUE



EXPENSES



SPECIAL EVENTS

Broad Comedy

In 2010, Women’s Health broke with tradition and changed our annual fall fundraiser. Instead of the usual gala and silent auction, Women’s Health hosted a performance by the hilarious all-woman comedy troupe, Broad Comedy. Tickets to the event, held at the Boulder Theater, were sold at three price points, making the event accessible to a wider array of people at a variety of income levels. As a result, the event drew about 700 people, almost twice the usual number at the Annual Gala. And we all had such a great time that we’re bringing back the Broads in 2011!

Champions of Choice Luncheon

In 2010, Women’s Health invited our Champions of Choice to lunch with Ralph Tromph, a playwright whose play about the conundrum of abortion in the U.S. had its premiere reading at Theatre O in Boulder. Our Champions of Choice luncheon serves as a fundraiser and a thank you to our Champions. Our Champions of Choice are women and men from our community who each donate a minimum of \$1,000 to help fund Women’s Health abortion services.

2010 DONORS

A sincere "Thank You" to all the individuals, businesses and foundations who help sustain our agency financially. Donors are advocates for our mission, enabling us to serve thousands of women, men, and teens each year.

INDIVIDUALS

Abbott, Perry	Butcher, Jane	Edelstein, David	Hamilton, Susan & Clark	Kendall, Cathleen & David
Ageton, Suzy	Butler, Joe	Elkins, Janas	Hamm, Colleen	Kindler, Bruce & Sherie
Altschuler, Lynn	Caplan, Elizabeth	Elliott, Jo Eleanor	Hammers, Joan	Kinnear, Karen L.
Andes-Georges, Linda	Caplan, Michael & Marsha	Ellis, Sally & Homer	Hansen, Brian	Kitty Flynn
& Georges, Jean-Pierre	Carlisle, Cynthia	Farley, Tillman	Harrison, Sue Ellen	Knappett, Kip
Anonymous	Carpenter, Juliet	Faurot, Nicole	Hast, Thomas	Knight, Charles
Arnold, Kathy & Charles	Carson, Anne & David	Fedak, John & Terry	Haugen, Patricia & Duane	Kofford, Renae & Larsen, Brian
Ash, Jordana & Lignell, Oliver	Cartwright, Robbie	Feld, Bradley A. & Batchelor, Amy	Hedberg, Natalie & Vanzandt, Tom	Kornblum, Nancy & Schreiner, Mike
Auer, Judith & Lawrence, George	Cary, Sharon	Finer, Richard & Alyssa	Helburn, Nicholas & Suzanne	Koval, David
Avery, Bobby & Brenda	Castro, Mirna & Adalberto	Fischer, Gerhard & Klose-Fischer, Ingrid	Hiatt, Paula	Kozelka, Jeffrey
Avery, John & Sarah	Cephas, Chellee R.	Fishman, Neil	Hill, Jo	Kropfli, Robert
Axel, Donna & Rosen, David	Champion, Judith	Foa, Sandra & Harrison, Dewitt	Hinebauch, Jon & Liz	Kube, Robyn
Bach, Johanna & Bernie	Chase-Jacobsen, Jaylynne	Follendorf, Patricia	Hodges, Jean & Jack	Kuelthau, Cam & Laurie
Bagwell, Delaine	Clelland, Jeanne	Hynan	Hodges, Trudy	Kunasz, Chela & Paul
Barclay, Connie & Bill	Clements, Anna Bell	Ford, William & Ann	Holden, Connie & Smith, T.K.	Lahey, Barbara K.
Barela, Donna & Dan	Cogan, Cathleen	Fishman-Franklin, Audrey & Franklin, Andrew	Holitza, James & Newman-Holitza, Carol	Laitres, Rita
Bargman, Carolyn	Cohen, Bill & Sara-Jane	Fross, Bradley	Hooton, Edie	Landes, Virginia
Barnica, Lisa	Cohen, Bonita	Gallagher, Alan C.	Horton, Robert B	Lane, David A.
Barter, Elke	Cohen, Eric	Gamauf, Kenneth	Hough, Suzanne	Largesse, Claire & Dec, Steven
Bashline, Peggy	Cohen, Linda & Bulkacz, Alex	Gammon, Karen & Ted	Howard, Holly	Larkin, Scarlet
Becker, Ruth & David	Connelly, Susan	Garstang, Ann	Howell, Pamela	Lasswell, Mim & Harold
Bell, Alan & Inger	Conrad, Sara	Gay, Frank	Hudiburg, Peggine & Roger	Leinbach, Joan & Harold
Bennett, Lisa & Jeff	Conroy, Emmy	Geneson, Cassandra	Hudson, Banks	Leonard, Mary & David
Berlin, Alix	Corbett, Susan & Kremm, Steve	Gibbs, Kimberly	Humphrey, Barb	Lerner, Doug
Bickman, Louise & Martin	Cornell, Eric & Landry, Celeste	Gilbert, Miriam	Hunnes, Eileen & Bob	Lerner, Joey & Elaine
Bickman, Sarah & Farkas, Daniel	Cueto, Christopher & Rebecca	Gille, Ellen & John	Jackson, Brett	Lester, Jill & Johnson, Mark
Bishop, Don & Judy	Culbertson, James	Goff, Kathryn J & Scott, Harold	Jacobson, Steve & Robinson, Sheryl	Leuth, Charles S
Blitz, Rich & Bise, Melinda	Cumbo, Karen J	Goldman, Margery	Jaehning, Judith	Levi, Karen & Jeff
Bosak, Trisha	Curlette, Diane	Goldstein, Ann Z.	Jelosek, Marilyn	Levy, Claire
Boucher, Virginia	Davis, Jeremy	Goodrich, Robert	Jenkins, Lisa A	Levy, Susan & David
Bradley, Alice Louise	DeAngelis, Anthony & Dahnke, Lois	Goulet, Marc	Jessel, Walter & Cynthia	Lewenthal, Jane
Brenner, Gary	DeClerk, Karen	Grantham, Jan & Geary	Johnson, Joanne	Lillie, Nancy
Brett, Joan & Golten, Bob	Dessel, Patricia	Grassgreen, Lori	Johnson, Karon & Lynn	Lindeke, Jeane
Brindell, Sheralee	Dick, Martha	Grassgreen, Randi	Johnson, Rita & Richard	Lindsay, Tammy
Brodsky, Julia & Aaron	Dineen, Mary & Masterson, Sue	Greenberg, Wayne & Patty	Jones, Betty	Linsky, Lois & Jeffrey
Brook, Annie	Dines, Marian	Greenhouse, Ellen & Wall, Lester	Julyk, Ingrid	Lirtzman, Diana Gay
Brooks, Christopher	Dixon, Michael John	Grice, Julia	Kanegis, Dvora	Long, Lori
Brown, Mark & Catherine	Donahue, Christine	Gross, David & Kremena	Karlsson, Terri C	Lopez Del Carr, Marina
Brudenell, Dina	Donharl, Margaret & Glenn	Guilfoile, Anne & Christoffel, Tom	Katz, Cassandra	Loveman, Robert & Gail
Buchanan, Alex	Downing, Lois	Hagman-Hazell, Jennifer & Hazell, Don	Kauffman, Christina	Lurie, Gail R.
Buchanan, Russell & Virginia	Downton, Mary & James	Halasz, Ida	Keenan, Jan & Olson, Richard	Lynch, Shannon
Bulinski, Helen & Richard	Dunlap, Gale & Sandy		Kellenberger, Jane Gill	Macar, Kamilla
Bundy, Gregory	Dyson, Michelle		Kendall, Barbara & Doug	Macfarlan, Sherburne & Susan
				Mackenzie, Bruce

Macris, Jim & Lanci-	Peterson, Carol	Simmons, Karen	Wernet, Carol	Collins, Rafik and
Macris, Angela	Peterson, Faye & Dave	Sinn-Penfold, Rob &	Wickstrom, Betty	Jacobson
Madigan, Diane	Plotkin, Nicole	Paula	Wild, Diane	Colterra
Mah, George & Petrea	Poehlmann, Harry &	Smalley, Nancy &	Wildau, Rich &	Community United
Maloney, Margaretha	Eleanor	Justin	McClew, Sharon	Church of Christ
& Palaich, Robert	Portmore, Julia	Smith, Michael &	Williams, Fred	Cottonwood Kennels
Mandell, Vicky	Potts, Lee	Carlyn	Wilson, Cindy	Covidien
Mandis, Anna & John	Powell-Ashby, Sally	Smith, Nora	Winklmann, Karl &	Culinary School of the
Markel, Jay & Carey	Preheim, Carrie	Smith, Wendy	Renee	Rockies
Marquardt, Barbara	Regan, Cathy	Smith-Denny, Susan	Winter, Cassie	Eight Days A Week
Marr, Ruby	Regan, Kimberly	Sodal, Sally	Wise, Duane	El Loro Jewelry & Clog
Marshall, Ellen &	Reich, William & Joy	Soden, Andrea	Witkin, Sue & Jack	Co.
Harwood, David	Richmond, Robin &	Speirn-Smith, Douglas	Woempner-Martin,	First National Bank of
Martin, Diane & Craig	Scharping, Tim	& Christy	Cynthia	Colorado
Mason, Francene	Richtel, Judith Ann	Spratt, Michael &	Wolf, Julie	Fisher Chevrolet-
Masterson Praeger,	Roberts, Joseph	Karyn	Wolff, Edwin & Mary	Honda-Pontiac
Kellie	Robertson, Philip &	Springer, Beverly &	Wolman, Natalie	Freewave Technologies
Mathieu, Mark A.	Marlys	Leonidas	(Nicky) & Fulker, David	Goff and Goff
Maxwell, Martha L.	Rogers, Robbin	Stanaway, Anne	Wouk, Arthur & Vita	Good Clean Love
Mayer, Sara	Rosenblum, Amy	Steinwand, Greg &	Wright, Mary	HD Consulting
McCaffrey, Sharon &	Rosenfeld, Beth &	Michelle	Wright, Ruth	IBI Synergy
Frankel, Lee	Fife, Lee	Stepanek, Caroline &	Wurn, Jaqueline &	In Joy Videos
McClendon, Robert	Rosenfeld, Eric S	Joseph F.	Grad, Steve	JSI / Denver
McCulloch, Margie	Ross, Paul	Stephens, Andrew	Yerger, Sally & Gordon,	Justin's Nut Butters
McDiarmid, Jennifer &	Roth, Fran	Stone, Julia &	Jerry	Lindsay J.C. Lack
Sterling, David	Rouse, Sharon	Cummings, Ron	Young, Blair	Look Good Now
McFarland, Zoe	Rubin, Bunny & Ted	Strand, Emmorette	Young, Deanna & Matt	Luna Bar
McKee, Jerome	Rucker, Emily	Strand, Kerri	Young, Hap & Nancy	Mark Carson & Assocs.
Meister, Margaret	Ryan, Victor & Barbara	Strauch, Margaret E.	Young, Matt	Mecca, Nourishing
Merritt, Shelly	Safran, Marian	Streeter, Lynn	Young, Terry	Communities
Messimer, Jean D	Sand, Cherry	Stroh, Randi &	Younghans, Sandy &	Microsoft Giving
Messenger, Joshua M.	Sandstrom, Mark	Anthony	Shepard, Richard	Campaign
Mezger, Linda & Bryan	Saunders, Lavon &	Stuart, Jane		Morgan Stanley
Miller, Barbara	Donald	Swaggart, Martha	Individual employee	Mountain Sun Brewery
Mitchell-Brown, Geri	Saunders, Susan & Jim	Tappert, Jill	contributions through:	Mustards Last Stand
Moore, Mary Sue	Scarboro, Ann	Tate, Ellen	Combined Federal	MyChelle
Morlock, Grace	Scarritt, Prudence &	Terpenning, Laura &	Campaign	Nature's Design
Morris, Rebecca	Jim	Pete	Foothills United	Associates
Munford, Alice M.	Schacht, Barry &	Thayer, David	Way	Nicole Nichols
Mylan, Roberta	Patrick, Jane	Udall, Mark & Fox,	IBM Employee	Photography
Naegele, Stuart	Schafer, Mary	Maggie	Campaign	Pekoe Sip House
Neighbors, William	Schlesinger, Mary	Umbough, Pat	Mile High United	Qualcomm
Nelson, Beverly &	Schmidt, Cynthia E.	Utley, Karen L.	Way	Railton McEvoy
McKay, Sidway	Schmoll, Katy	Vandersall, Amy L		Architects
Nelson, Natalie	Schoettle, Anna	Vidulich, Barbara	BUSINESSES	Rebecca's Herbal
Ness, Margaret	Schuham, Steven &	Vigil, Luana	Advantage Auto Club	Apothecary
Neville, John & Joyce	Carolyn	Vincent, Anne	Alaska Network on	Roche Colorado Corp.
Nichols, Lori	Segal, Jo An S.	Vogt, Anne	Domestic Violence and	Root Down
Nordback, Kurt	Selbin, Joel & Marion	Walker, Sophie	Sexual Assault	Salt
Novak, Donella	Shapiro, Nancy & Mark	Wallace, Alice Dodge	Amnesty International	Studio 3 Kitchen
O'Leary, Kasey & Rich	Shea, Tim & Caroline	Walsh, Geraldine R	CU	Design
Olson, Patricia &	Sheldon, Diana & Tom	Robert Waters	Art & Soul Gallery	Sturtz & Copeland
Jeffrey	Sherwood, Carla	Watters, Danielle T.	Art Cleaners	The Kitchen
O'Neal, Greg	Siegal, Kimberly	Weatherley, Sara	Ball Corporation	Twisted Pine Brewery
Palmer, Tami	Siegal, Marni & Gane,	Webber, Mary &	Bear Naked Granola	United Way of the
Papke, Edgar & Lori	Val	Grammens, Gerald	Bhakti Chai, LLC	Bluegrass
Park, Lauren	Sievers, Nancy K.	Weber, Karen & Philip	Bodywork Boutique	Upslope Brewing Co
Pedersen, John	Silver, Abby	Weckwert, Heidi	Boulder Weekly	Vail Powder Guides
Pelz, Robert & Erna Maj	Silvestre, Eva	Weinberg, Ruth	BW Construction	<i>Continued next page</i>

BOARD OF DIRECTORS

Chana Goussetis
President

Joan Brett
Vice-President

Andrea Soden
Secretary

Ewa Borowska
Co-Treasurer

David Gross
Co-Treasurer

Judith Champion
Chellee Cephas
Randi Grassgreen
Ellen Greenhouse
Steve Jacobson
Nancy Kornblum
Lauren Park
Sharon Rouse
Gregory Steinwand

ADMINISTRATIVE STAFF

Susan Levy, RN, JD

Jan Shepherd, MD

Heidi Halpern

Linda Johnson, MSN, WHNP

Blair Young

Danielle Watters

Mirna Ramirez-Castro

Karen DeClerk

Ellen Teig

Kelly Pollard

Lisa Radelet

Executive Director/CEO

Medical Director

Finance Director/CFO

Clinical Director/COO

Development Director

Youth Services Director

Latina Program Director

Counseling Supervisor

Contraceptive Continuity Initiative

Clinic Manager

Communications Manager

2010 DONORS *continued from p. 11*

Vodka 14
Wells Fargo
Wishgarden Herbs
Yellowscene

FOUNDATIONS

Anchor Point Gift Fund
April Fund
Arbogast Foundation
Brett Family Foundation
Burt Foundation
Carson-Pfafflin Family Foundation
Colorado Trust
Community Foundation serving Boulder County:
Community Trust Fund
Ertl Gift Fund
Everest '96 Memorial Gift Fund

Jared Polis Foundation
McIntyre Family Fund
Open Door Fund
Ormsbee Family Fund
Sadie Gift Fund
Denver Foundation
Franklin Templeton
Charitable Giving Fund
Edna and Monroe C. Gutman Foundation
Greenhouse-Wall Family Fund
L.P. Brown Foundation
Longmont Community Foundation
Mandell L. & Madeleine H. Berman Foundation
Namaste Foundation
NOBS4 Fund
Norman Foundation

Susan G. Komen for the Cure, Denver Metro Temple Hoyne Buell Foundation
Virginia Hill Charitable Foundation

GOVERNMENT

Title X Federal Grant- (delegate agency)
Boulder County
City of Boulder Housing & Human Services
City of Boulder Youth Opportunities Program
City and County of Broomfield
City of Longmont







CLINICS: 2855 Valmont Rd, Boulder, CO 80301 • 82 21st Ave, Longmont, CO 80501
PHONE: Administrative Line: 303-440-9320 • Clinic: 303-442-5160 **EMAIL:** info@bvwhc.org
WEBSITES: www.boulderwomenshealth.org • www.teenclinic.org